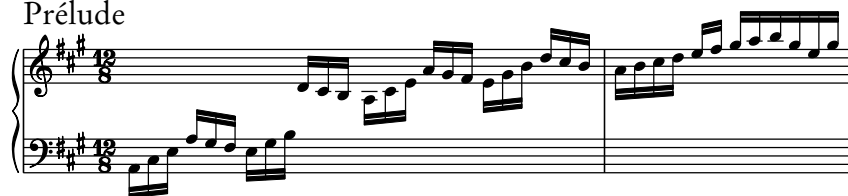


INHALT / CONTENTS

Vorwort	V
Vorschläge zur Interpretation	VI
Preface	XI
Suggestions for Performance	XII

Suite 1 BWV 806	2
-----------------------	---

Prélude



Suite 2 BWV 807	20
-----------------------	----

Prélude



Suite 3 BWV 808	38
-----------------------	----

Prélude



Suite 4 BWV 809	54
-----------------------	----

Prélude



Suite 5 BWV 810	70
-----------------------	----

Prélude



Suite 6 BWV 811	90
-----------------------	----

Prélude



Kritische Anmerkungen	114
-----------------------------	-----

Critical Notes	125
----------------------	-----

Suite 2 BWV 807

Prélude

Musical score for the Prelude of Suite 2, BWV 807, by J.S. Bach. The score is in 3/4 time and D major. It consists of six systems of two staves each (treble and bass clef). The music features a continuous eighth-note pattern in the right hand and a more varied bass line in the left hand. Fingerings are indicated by numbers 1-5 above or below notes. The piece concludes with a final cadence in the right hand.

Allemande

Measures 1-2 of the Allemande. The piece is in C major and 3/4 time. Measure 1 features a treble clef with a quarter note G4 (fingered 3), a quarter note A4 (fingered 2), and a quarter note B4 (fingered 4). The bass clef has a whole note C3. Measure 2 continues with a treble clef containing eighth notes G4 (fingered 1), A4 (fingered 2), B4 (fingered 5), and a quarter note C5 (fingered 1). The bass clef has a whole note C3.

Measures 3-4 of the Allemande. Measure 3 has a treble clef with a quarter note G4 (fingered 3), a quarter note A4 (fingered 2), and a quarter note B4 (fingered 5). The bass clef has a whole note C3. Measure 4 has a treble clef with a quarter note G4 (fingered 2), a quarter note A4 (fingered 3), a quarter note B4 (fingered 5), and a quarter note C5 (fingered 4). The bass clef has a whole note C3.

Measures 5-6 of the Allemande. Measure 5 has a treble clef with a quarter note G4 (fingered 1), a quarter note A4 (fingered 2), a quarter note B4 (fingered 3), and a quarter note C5 (fingered 5). The bass clef has a whole note C3. Measure 6 has a treble clef with a quarter note G4 (fingered 3), a quarter note A4 (fingered 2), a quarter note B4 (fingered 5), and a quarter note C5 (fingered 1). The bass clef has a whole note C3.

Measures 7-8 of the Allemande. Measure 7 has a treble clef with a quarter note G4 (fingered 4), a quarter note A4 (fingered 2), a quarter note B4 (fingered 5), and a quarter note C5 (fingered 1). The bass clef has a whole note C3. Measure 8 has a treble clef with a quarter note G4 (fingered 5), a quarter note A4 (fingered 3), a quarter note B4 (fingered 5), and a quarter note C5 (fingered 1). The bass clef has a whole note C3.

Measures 9-10 of the Allemande. Measure 9 has a treble clef with a quarter note G4 (fingered 2), a quarter note A4 (fingered 5), a quarter note B4 (fingered 5), and a quarter note C5 (fingered 5). The bass clef has a whole note C3. Measure 10 has a treble clef with a quarter note G4 (fingered 2), a quarter note A4 (fingered 5), a quarter note B4 (fingered 5), and a quarter note C5 (fingered 2). The bass clef has a whole note C3.

Measures 11-12 of the Allemande. Measure 11 has a treble clef with a quarter note G4 (fingered 4), a quarter note A4 (fingered 3), a quarter note B4 (fingered 2), and a quarter note C5 (fingered 5). The bass clef has a whole note C3. Measure 12 has a treble clef with a quarter note G4 (fingered 5), a quarter note A4 (fingered 4), a quarter note B4 (fingered 2), and a quarter note C5 (fingered 1). The bass clef has a whole note C3.

Suite 3

BWV 808

Prélude

The musical score for the Prélude of Suite 3, BWV 808, is presented in two systems of staves. The first system covers measures 1 through 6, and the second system covers measures 7 through 54. The piece is in G minor (two flats) and 3/8 time. The notation includes a variety of rhythmic patterns, slurs, and ornaments. Fingerings are indicated by numbers 1-5. The score is divided into measures by vertical bar lines, with measure numbers 7, 13, 19, 25, and 29 clearly marked. The final measure is marked with the number 54.

Gavotte II

Measures 1-3 of Gavotte II. The piece is in 2/4 time with a key signature of two sharps (F# and C#). The right hand features a melody with grace notes and fingerings (2, 2, 1, 1, 1, 2, 1, 1, 1, 2). The left hand provides a steady accompaniment with fingerings (2, 1, 1, 1, 2, 1, 1, 1, 2).

Measures 4-6 of Gavotte II. Measure 4 includes a trill and a triplet. Measure 5 features a triplet and a double bar line. Measure 6 has a first ending (1.) and a second ending (2.). Fingerings include 2, 2, 3, 3, 3, 2, 1, 1, 1, 2.

Measures 7-12 of Gavotte II. Measure 7 starts with a repeat sign and a trill. Measure 8 has a trill. Measure 9 includes a trill and a triplet. Measure 10 has a triplet and a double bar line. Measure 11 has a first ending (1.) and a second ending (2.). Measure 12 has a first ending (1.) and a second ending (2.). Fingerings include 2, 2, 2, 1, 1, 1, 1, 3, 2, 2, 2, 1, 1, 1, 2.

Measures 13-16 of Gavotte II. Measure 13 has a trill. Measure 14 has a trill and a double bar line. Measure 15 has a trill and a double bar line. Measure 16 has a trill and a double bar line. Fingerings include 2, 1, 2, 1, 2, 1, 1, 2.

Measures 17-20 of Gavotte II. Measure 17 has a trill. Measure 18 has a trill. Measure 19 has a trill and a double bar line. Measure 20 has a trill and a double bar line. Fingerings include 1, 1, 1, 2, 1, 1, 2, 2, 2, 2.

Measures 21-24 of Gavotte II. Measure 21 has a trill and a triplet. Measure 22 has a trill and a double bar line. Measure 23 has a trill and a double bar line. Measure 24 has a trill and a double bar line. Fingerings include 2, 3, 1, 1, 1, 1, 2, 1, 2, 2, 2.

[Gavotte I]